

Your future success starts with taking a step today.

And we've made it easy to find the next step that's right for you.



We've got the tips, tools, and resources to help make sense of everything from college applications and financial aid, to learning how to channel your interests and hobbies into a rewarding career choice.



See your future self.

Take the Future Finder quiz and find out what careers are a match for your skills and interests.

Plan your future lifestyle.

Start thinking ahead and plan for a career to meet your desired lifestyle.



Get ready.

Find out what you need to know to prepare for college, customized for your current grade level.



Research careers pathways.

Discover occupations that closely match to your work-related interests by taking the Career Cluster quiz.



IDAHO

AFTER GRADUATION

2022-2023



can open doors to **NEW SKILLS,**

JOB OPPORTUNITIES

and **BETTER PAY!**



ARE YOU LOOKING FOR WORK OR STARTING A NEW CAREER?

JOB LISTINGS ON IDAHOWORKS

Create an online profile that employers can search. View thousands of job openings by city, county or occupation. Sign up for instant job alerts.

YOUTH EDUCATION AND TRAINING SUPPORT

Adults and youth who meet certain criteria may be eligible for support with earning a GED, accessing training, education or tutoring resources, and finding employment.

APPRENTICESHIPS

Combine on-the-job training with job-related instruction while learning specific skills, gaining job experience and earning a credential.

JOBSCAPE

This easy-to-use career planning tool helps job seekers and students make informed education and career decisions.



Scan the QR code or learn more at
IdahoWorks.gov/job_seeker

We have nine offices and now more than 50 mobile locations throughout the state with walk-in service or by appointment.
labor.idaho.gov/officedirectory

A proud partner of the **americanjobcenter** network

The Idaho Department of Labor is an equal opportunity employer and service provider. Language services and reasonable accommodation for customers with disabilities are available upon request. Dial 711 for Idaho Relay Service.

This publication and program is produced by the Idaho Department of Labor which is funded in part by federal grants from the U.S. Department of Labor. Costs associated with this publication are available by contacting the Idaho Department of Labor.

TABLE OF CONTENTS

JUNIOR & SENIOR CHECKLIST	PG 3-4
QUESTIONS FOR AN ADMISSIONS REPRESENTATIVE	PG 5-6
BOISE BIBLE COLLEGE	PG 7
BOISE STATE UNIVERSITY	PG 8
BYU - IDAHO	PG 9
COLLEGE OF EASTERN IDAHO	PG 10
COLLEGE OF SOUTHERN IDAHO	PG 11
COLLEGE OF WESTERN IDAHO	PG 12
IDAHO STATE UNIVERSITY	PG 13
LEWIS-CLARK STATE COLLEGE	PG 14
NORTH IDAHO COLLEGE	PG 15
NORTHWEST NAZARENE UNIVERSITY	PG 16
THE COLLEGE OF IDAHO	PG 17
UNIVERSITY OF IDAHO	PG 18
TOP ACADEMIC PROGRAMS	PG 19-20
NEXT STEPS IDAHO: INFINITE FUTURES	PG 21
NEXT STEPS IDAHO: PROFESSIONAL TRAINING	PG 22

To the students and family of Idaho:

The Idaho Association of Collegiate Registrars and Admissions Officers (IACRAO) is proud to share with you the 2021-2022 Higher Education in Idaho Magazine. In this publication you will find helpful information about Idaho's colleges and universities. Our mission is to ensure you have the information you need to make your go-on decision and to understand the investment you are making for your future.

Thank you for taking time to learn more about the institutions of Higher Education in the state of Idaho. We wish you success in your academic pursuits.

Sincerely,

The 2021-2022 IACRAO Executive Board

Jason Meldrum, Brigham Young University –
President

Effie Hernandez, College of Eastern Idaho –
President-Elect

Jessica Eby, University of Idaho –
Past-President

Brenda Summers, University of Idaho –
Secretary-Treasurer

Bianca Ridley, Idaho State University –
High School Relations/Admissions Chair

Seneca Jenson, University of Idaho –
State Board of Education Advisory Chair

Sitlaly Escamilla, College of Western Idaho –
Diversity Chair

Savannah Allmett, Boise State University –
Technology/Communication Chair

Westin Cordier, Brigham Young University --
Higher Ed Days Coordinator

Alyson Vernon, Idaho State University --
Counselor Day Coordinator

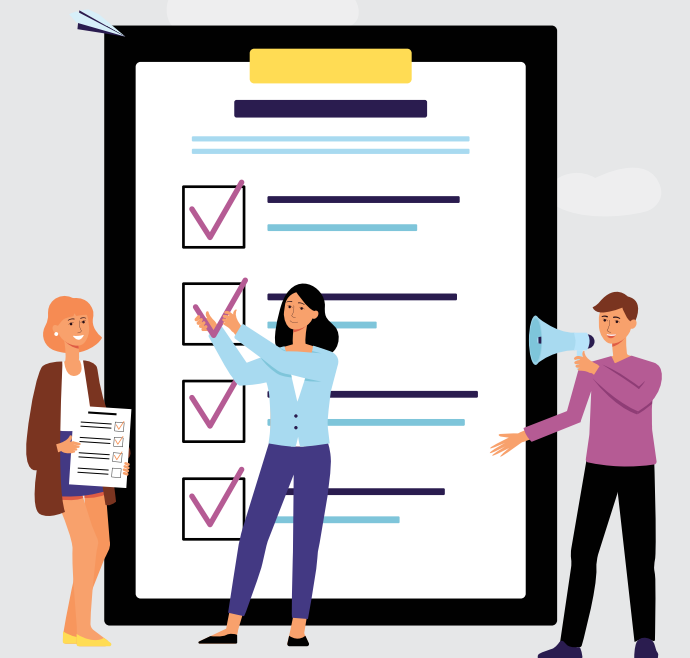
SENIOR CHECKLIST



JUNIOR CHECKLIST

- PLAN YOUR JUNIOR AND SENIOR YEAR COURSES.** Make sure to check with your High School Counselor to review your schedule and ensure you are meeting your graduation requirements
- ATTEND IDAHO HIGHER EDUCATION DAY.** This annual, spring event, will help you learn more about your options to continue your education within the state of Idaho.
- TAKE THE SAT.** Some colleges may require the SAT or ACT for fall 2022 admission or scholarships. Check with your counselor or colleges you're considering and register to take the test if required.
- CHECK OUT COLLEGES AND UNIVERSITIES.** Utilize your spring and summer break to try and visit schools you are interested in either virtually or in-person. Take a tour of the campus, meet faculty, visit the Financial Aid Office, and tour the dorms-- these are all great ways to help you determine if you can visualize yourself as a future student.
- DEVELOP A RESUME.** Use this as a record of your accomplishments, activities, work, and volunteer experience(s). If you are looking to build your resume, consider joining a school club, career/ technical student organization, religious or civic group, or maybe take on a new leadership role!
- RESEARCH COLLEGE APPLICATIONS.** Make the most of your summer vacation by planning your application timeline. As you prepare, make a list of the application and financial aid deadlines so you can check back on this during your senior year.
- TALK ABOUT FINANCES WITH A PARENT OR MENTOR.** Create a college budget and brainstorm ways to fund your education. Consider getting a summer job to start building a college fund, boost your resume, and explore fields of interest.
- EXPLORE SCHOLARSHIPS.** Did you know there are scholarships available to juniors? Be sure to review their requirements to see if they require community service or affiliation with a national club. If so, utilize this year to complete any missing requirements.

- COMPILE YOUR COLLEGE LIST.** Create a document that includes your schools of interest, their deadlines, and what additional requirements might be needed to complete your application. If schools require the ACT/SAT and you have not taken this test yet, make sure to register!
- PREP SUPPLEMENTAL MATERIALS.** Some colleges or universities might require additional materials such as an essay, letters of recommendation, or a resume. As you finalize these materials, make sure to ask for feedback from your teachers, counselors, or other close mentors.
- SUBMIT YOUR COLLEGE APPLICATIONS.** Consider applying to more than one college or university. You can weigh your offers and financial aid packages later in the spring to help determine where you might attend. Use the Apply Idaho application at nextsteps.idaho.gov/resources/apply-idaho to apply for all the state schools at one time. BYU-Idaho, Boise Bible College, and out of state universities require a separate application.
- REQUEST YOUR TRANSCRIPTS.** Some colleges or universities will require that you submit your high school transcript to apply. Check with your chosen colleges or universities to learn how to submit your transcript to them.
- APPLY FOR SCHOLARSHIPS AND GRANTS** like the Idaho Opportunity Scholarship. boardofed.idaho.gov/scholarships/idaho-opportunity-scholarship/ Ask your High School Counselor, Admissions Representative, or any local organizations you are involved with to see if they might have any additional opportunities. A great scholarship resource is: boardofed.idaho.gov/scholarships/
- SUBMIT YOUR FAFSA.** Completing the FAFSA is the first step to getting grants or loans from federal or state governments and colleges and universities. In addition, this might be required for some scholarship applications. Check with your High School Counselor to see if your school might be hosting a FAFSA completion night to help get you started.
- ACCEPT YOUR ADMISSION OFFER.** Congratulations- it's time to decide! Review your offers (including tuition, financial aid package(s), academic programs, etc.) and notify which school you will join in the fall. Then, be sure to follow up to learn about any remaining next steps.
- SIGN UP FOR HOUSING.** Ask your chosen schools about housing options and deadlines, as open spaces can fill up quickly!



QUESTIONS

FOR AN ADMISSIONS REPRESENTATIVE

Researching your options after high school can be overwhelming, exciting, and stressful. However, colleges and universities have Admissions Representatives to help guide you through this process. Check with your High School Counselor to see when these representatives are visiting and how to reach out to them. Whether you meet in person, set up a virtual meeting, or reach out with a phone call or email, here are some questions to help you get started.

Remember, there is no such thing as a bad question. Admissions Representatives are always happy to help you through this process, even if you're not sure what to do next.

CAN I SEE MYSELF ON THIS CAMPUS?

1. When should I visit your school? What types of campus visits do you offer? Do you offer virtual visit opportunities?
2. What is one word students would use to describe your school?

WHAT ARE THE ADMISSION REQUIREMENTS?

1. How do I apply? Where is your application located? What materials do you need from me?
2. What do you look for in an applicant? When is your application deadline?

HOW DO I PAY FOR YOUR COLLEGE?

1. How much will it cost to go to your school? What is included in that cost? Who can help me learn more?
2. What type of scholarships do you offer? When is the deadline? What is the criteria? How do I apply for them?

WHAT IS THE CLASSROOM/ACADEMIC EXPERIENCE LIKE?

1. What is the average class size? What is the biggest classroom on campus?
2. Here are a few subject areas/future jobs I'm interested in. What study abroad trips, internships, research opportunities, or projects are available for me? Is there a person I can contact to learn more? Feel free to ask what students gain from doing exploration opportunities

WHAT IS STUDENT LIFE LIKE ON YOUR CAMPUS?

1. Is it required to live on campus? If so, what is it like and how much does it cost? What does that cost include? If it's not required to live on campus, where do you recommend I live?
2. What do students do for fun both on and around your campus? I am interested in (tell them your favorite club or activity). Do you have that at your school?

WHAT SUPPORT OR RESOURCES ARE THERE?

1. What health and academic support services are on campus? Do you offer tutoring support or writing centers? Is there a fee?
2. If I need additional accommodations, who can I contact? What accommodations could be available to me?

WHAT CAN I DO AFTER GRADUATION?

1. How does your school help prepare students before graduation? Do you have a Career Services office? If so, how can they help?
2. What are your students doing after graduation?

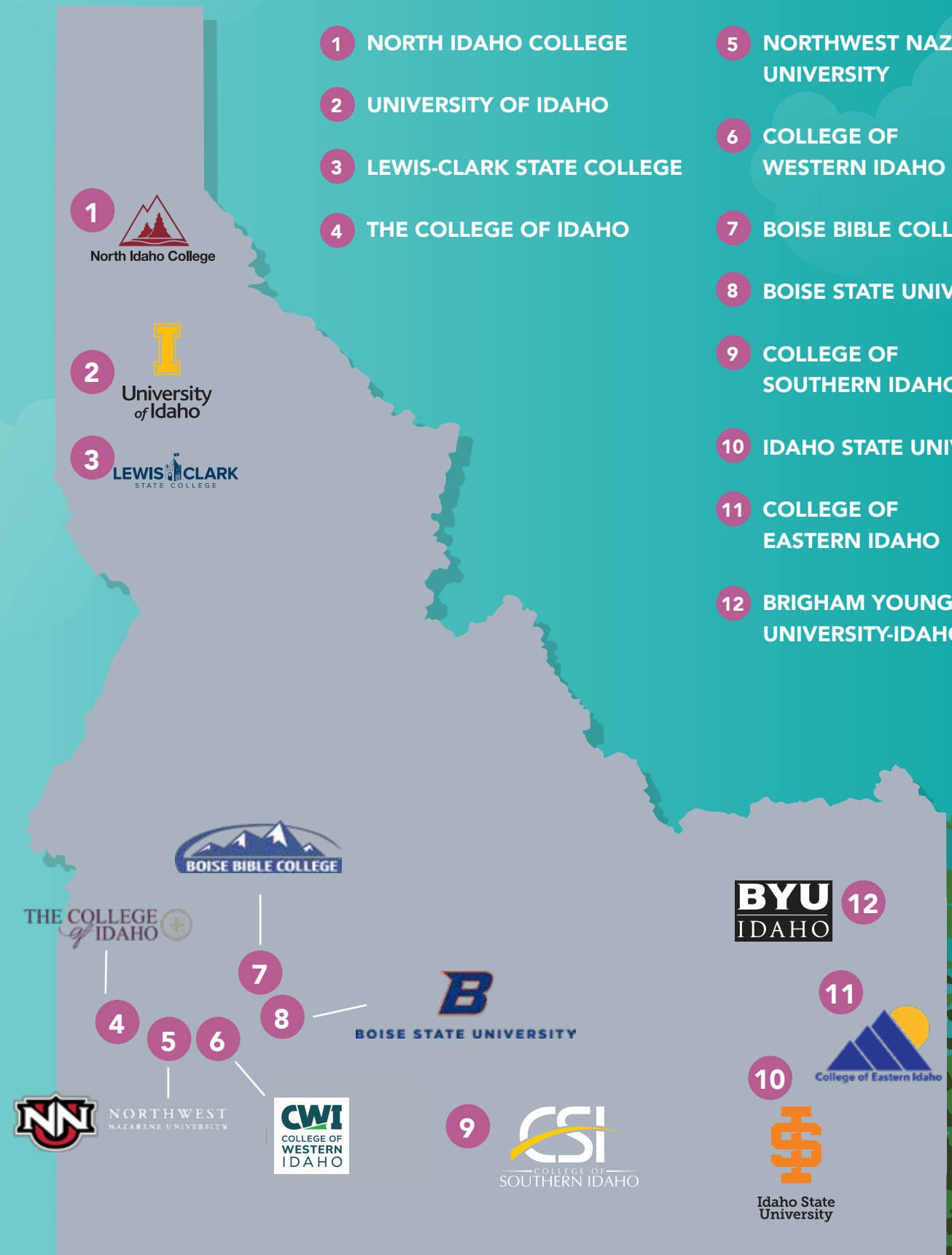
Review the questions above and highlight your favorite ones to ask! Write down which schools you are interested in.

1. _____
2. _____
3. _____

Are any of these schools planning to visit your high school? When? If not, ask your High School Counselor for assistance in finding out who to contact.

NOTES: What have you learned or want to remember after contacting the Admissions Representative? Do you have any follow-up questions you want to ask?

COLLEGES IN IDAHO



- 1 NORTH IDAHO COLLEGE
- 2 UNIVERSITY OF IDAHO
- 3 LEWIS-CLARK STATE COLLEGE
- 4 THE COLLEGE OF IDAHO
- 5 NORTHWEST NAZARENE UNIVERSITY
- 6 COLLEGE OF WESTERN IDAHO
- 7 BOISE BIBLE COLLEGE
- 8 BOISE STATE UNIVERSITY
- 9 COLLEGE OF SOUTHERN IDAHO
- 10 IDAHO STATE UNIVERSITY
- 11 COLLEGE OF EASTERN IDAHO
- 12 BRIGHAM YOUNG UNIVERSITY-IDAHO



In an accepting environment, you can deepen your relationship with Jesus while being equipped to advance the gospel worldwide through vocational ministry or the marketplace. Uniquely, the degrees in Education, Psychology, and Christian Ministry focus both on leadership development and professional skills to achieve all your passions. Whether you attend for one-year or four-years, you are given the skills needed to become people of influence and change the world.

Maybe it's our central location at the heart of the capital-the hub of government, business, health-care, innovation, or our strong connections with hundreds of companies and organizations in the region. Maybe it's because we're Idaho's metropolitan research university, or perhaps it's our close proximity to the adventures that lie in the foothills along the Greenbelt or down the river. Maybe it's the cutting edge technology and academic success which fuels the University and surrounding community. No matter the reason, coming to Boise State will put you in a culture of innovation with opportunities in all the right places.



TAKING A TOUR:

www.boisebible.edu/visitcampus

HOW TO APPLY:

www.boisebible.edu/apply
 Deadline: Fall - August 10th or
 Spring - December 15th

TUITION: (PER YEAR)

\$16,360 for Tuition
 (12 credits per semester/FT enrollment),
 Housing, and Meal Plan

FINANCIAL AID:

www.boisebible.edu/financialaid

GET IN TOUCH:

boisebible.edu
 208-376-7731
admissions@boisebible.edu

TAKING A TOUR:

visit.boisestate.edu
 208-426-1156

HOW TO APPLY:

apply.boisestate.edu
 Deadline: May 1

TUITION: (PER YEAR)

Idaho Resident: \$8,060

FINANCIAL AID:

boisestate.edu/financialaid
 208-426-1664

Scholarship Priority Deadline:
 February 15

GET IN TOUCH:

boisestate.edu
 208-426-1156
admissions@boisestate.edu





Founded in 1888, BYU-Idaho cultivates a distinctive environment in accordance with the standards of its sponsor, The Church of Jesus Christ of Latter-day Saints. While most universities are research-focused and faculty-centered, BYU-Idaho is teaching focused and student-centered. Through hands-on student instruction and leadership opportunities, students are given practical opportunities to build skills that will help them become Disciples of Christ and leaders in the workforce. As students engage in active teaching and learning, they will become a qualified leader in their families, the Church, the workplace, and the community.



TAKING A TOUR:

byui.edu/admissions
208-496-1411

HOW TO APPLY:

apply.churchofjesuschrist.org
208-496-1411
Deadline: September 1

TUITION: (PER YEAR)

LDS: \$4,416
Non LDS: \$8,832

FINANCIAL AID:

byui.edu/financial-aid
Deadline: July 1
(also based on FAFSA)

GET IN TOUCH:

byui.edu/admissions
208-496-1411
admissions@byui.edu

College of Eastern Idaho, located in Idaho Falls, is Idaho's newest community college offering students both AA and AS degrees (starting Spring 2018) as well as Career Technical Education. Our technical programs provide hands-on-training to give our students real world experience to prepare them to enter their chosen career. Our academic degrees provide pathways to help students get their 2 years of general education completed before transferring to a university. We pride ourselves on our small class sizes, with a student to teacher ratio of 10 to 1 in 2019-2020. Our high graduate job placement rate of 92% is another way we take care of our students. We believe in Real Education, Real Jobs for Real Life.



TAKING A TOUR:

208-524-3000
or 208-535-5337

HOW TO APPLY:

cei.edu/admissions
208-524-3000
Deadline: none

TUITION: (PER YEAR)

In-District: \$3,096
Out-of-District: \$4,296

FINANCIAL AID:

eitc.edu/financial-aid
208-535-5374
Deadline: June 1

GET IN TOUCH:

www.cei.edu
208-524-3000
admissions@cei.edu





College of Western Idaho (CWI) is located in the Treasure Valley—the state’s cultural and economic hub. The Treasure Valley is recognized nationally as a great place to live, work, and get an education. CWI is the largest community college in Idaho and provides students an abundance of opportunities for learning. Locations include Boise, Nampa, and Online. Numerous degrees are offered fully in person, traditional online, hybrid, hyflex and remote. CWI offers affordable education with low cost per credit and access to scholarships and financial aid. With a full range of certificates and two-year degrees, transferring to a university or directly into the workforce are both great options. The quality of education at CWI competes with any college or university.



Nestled in the heart of Southern Idaho, CSI’s main campus is located in beautiful Twin Falls. Skiing, rock climbing, geothermal hot springs, white water rafting, fishing, and more are all less than an hour away. With off-campus locations in Gooding, Jerome, Hailey, and Burley, CSI offers over 130 degree programs, including a myriad of online classes. The 315-acre campus houses a state-of-the-art Fine Arts Center, traditional dorm-style living, the largest ropes course west of the Mississippi, over 50 student clubs, and 9 NJCAA athletic teams who have brought home 20 championships. Amid rising costs for college, The College of Southern Idaho remains one of the most affordable higher education options offering Associate degrees and technical certificates.



TAKING A TOUR:

www.csi.edu/admissions
208-732-6221

HOW TO APPLY:

www.csi.edu/admissions
208-732-6221
Deadline: August 10

TUITION: (PER YEAR)

In-District: \$3,360
Out-of-District: \$4,560

FINANCIAL AID:

208-732-6221
csi.edu/financialaid
Deadline: July 16
(applications and documents turned in)

GET IN TOUCH:

csi.edu
208-732-6221
www.csi.edu/admissions

TAKING A TOUR:

cwi.edu/visit
208-562-3000

HOW TO APPLY:

cwi.edu/apply
208-562-3000
onestop@cwi.edu
Deadline: August 14

TUITION: (PER YEAR)

In-District: \$3,336
Out-of-District: \$4,336

FINANCIAL AID:

cwi.edu/financialaid
208-562-3000

GET IN TOUCH:

cwi.edu/contact
208-562-3000
onestop@cwi.edu





Idaho State University



LEWIS-CLARK
STATE COLLEGE

Rated as one of the top four public regional colleges in the West by U.S. News & World Report, Lewis-Clark State College is a school dedicated to your needs. "The Warrior Way" at LC State is about quality education and a warm campus culture, all at a price that you can afford. LC State features a personalized classroom experience in a small college environment, where faculty and staff will go the extra mile for you. Located in Lewiston, the tree-lined campus blends traditional and modern structures, while wilderness and recreation areas are only minutes away. At LC State, "The Warrior Way" is more than an education: it's a lifestyle.

Idaho State University is a Carnegie-classified research institution located in Pocatello, with additional locations in Idaho Falls, Meridian and Twin Falls. At the heart of an outdoor-lover's paradise, Idaho State is a short drive to some of America's greatest natural wonders and exciting outdoor recreation opportunities. Idaho State is the state's designated leader in the health professions, and with more than 250 academic programs and 150 student clubs and organizations, there are plenty of opportunities to become part of the Bengal community. Opportunities for undergraduate research, performing in a nationally acclaimed performing arts center, and personal interaction with faculty members are just a few of the reasons our students choose Idaho State.



TAKING A TOUR:

isu.edu/visit
208-282-2100

HOW TO APPLY:

isu.edu/apply
208-282-2123
Deadline: August 1

TUITION: (PER YEAR)

Idaho Resident \$7,872

FINANCIAL AID:

isu.edu/financialaid
208-282-2756
Scholarship Deadline: February 15

GET IN TOUCH:

isu.edu/visit
208-282-2123
info@isu.edu
Pocatello: isu.edu
Idaho Falls: isu.edu/ifche
Meridian: isu.edu/meridian
Twin Falls: isu.edu/tfctr



TAKING A TOUR:

lcsc.edu/visit-campus
208-792-2378

HOW TO APPLY:

lcsc.edu/admissions
Deadline: August 8

TUITION: (PER YEAR)

Idaho Resident: \$6,982

FINANCIAL AID:

lcsc.edu/financial-aid or
208-792-2224
Priority Deadline: March 1

GET IN TOUCH:

lcsc.edu
208-792-2378
admissions@lcsc.edu



Founded in 1933, North Idaho College (NIC) is a comprehensive community college located on the stunning shores of Lake Coeur d'Alene. NIC offers degrees and certificates in a wide spectrum of academic transfer and career and technical education programs. Approximately 6,000 students are enrolled in credit classes and more than 4,400 participate annually in non-credit courses.



North Idaho College



TAKING A TOUR:

nic.edu/visit
208-769-3311

HOW TO APPLY:

nic.edu/apply
208-769-3311
Deadline: August 12

TUITION: (PER YEAR)

In-District: \$3,396
Out-of-District: \$4,960

FINANCIAL AID:

nic.edu/financialaid
208-769-3311
No Deadline

GET IN TOUCH:

nic.edu/CardinalCentral
877-404-4536
CardinalCentral@nic.edu



Founded in 1913, Northwest Nazarene University is a comprehensive Christian university with over 80 undergraduate areas of study, 19 master's degrees in six different disciplines, six Education Specialist degrees and two doctoral degrees. NNU is committed to providing a transformational education that prepares its students to pursue a meaningful life rooted in timeless Christian values. NNU has more than 2,000 undergraduate and graduate students, 6,000 continuing education students, and more than 10,000 high school students who participate in the University's concurrent credit program. NNU is accredited by the Northwest Commission on Colleges and Universities (NWCCU), a regional accrediting body recognized by the Council for Higher Education Accreditation (CHEA).



nnu.edu/visit
208-467-8640 or
Email: visit@nnu.edu

HOW TO APPLY:

nnu.edu/apply
1-877-NNU-4-YOU
Email: admissions@nnu.edu
Deadline: February 1

TUITION: (PER YEAR)

Resident: \$34,390

FINANCIAL AID:

(based on admission application and FAFSA)
208-467-8638
Deadline: January 15

GET IN TOUCH:

nnu.edu
208-467-8000
admissions@nnu.edu





THE COLLEGE of IDAHO



The College of Idaho has a 129-year-old legacy of excellence. The College is known for its outstanding academic programs, winning athletics tradition, and history of producing successful graduates, including seven Rhodes Scholars, three governors, and countless business leaders and innovators. Its distinctive PEAK Curriculum challenges students to attain competency in the four knowledge peaks of humanities, natural sciences, social sciences, and a professional field—empowering them to earn a major and three minors in four years. The College's close-knit, residential campus is located in Caldwell, where its proximity both to Boise and to the world-class outdoor activities of southwest Idaho's mountains and rivers offers unique opportunities for learning beyond the classroom.



University of Idaho

TAKING A TOUR:

uidaho.edu/visit
208-885-6163

HOW TO APPLY:

uidaho.edu/application
208-885-6326
Email: admissions@uidaho.edu
No Deadline

TUITION: (PER YEAR)

Resident: \$8,304

FINANCIAL AID:

uidaho.edu/financial-aid
208-885-6312
Priority Date: December 1, then rolling

GET IN TOUCH:

uidaho.edu/admissions
208-885-6163
futurestudents@uidaho.edu



TAKING A TOUR:

collegeofidaho.edu/visit
208-459-5020 or
visitcenter@collegeofidaho.edu

HOW TO APPLY:

collegeofidaho.edu/apply
Deadline: May 1
Regular Decision February 15

TUITION: (PER YEAR)

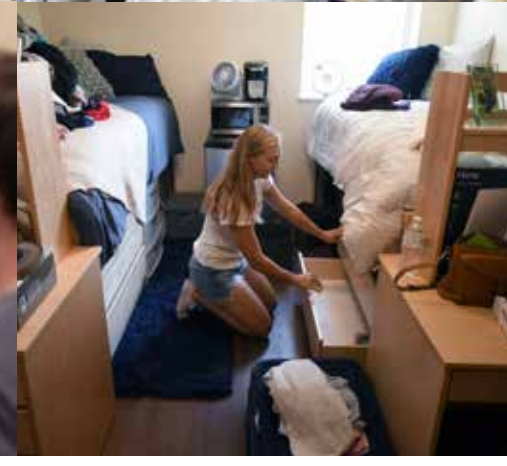
Resident: \$32,100

FINANCIAL AID:

collegeofidaho.edu/financialaid
208-459-5307
Deadline: February 15

GET IN TOUCH:

collegeofidaho.edu/admission
208-459-5011
admission@collegeofidaho.edu



There's something monumental waiting for you at the University of Idaho. We call it your breakthrough — that moment the light sparks on and your future opens. Your breakthrough might happen as you study fire in our experimental forest. Cheer on Vandal football beneath our iconic Kibbie Dome. Or gather with friends on our beautiful ivy-clad campus. At Idaho's largest research university, you explore big questions and find unexpected answers. Choose from 300 academic programs. Learn from professors with world-renowned expertise. Do real research (2/3 of undergraduates participate in hands-on experiences). Here, you awaken your mind, forge a new path, and discover what's next for you and the world. What will your breakthrough be?



TOP ACADEMIC PROGRAMS

BY INSTITUTION

Compare the most popular and unique offerings from these Idaho institutions. Be sure to visit the listed website for a complete list of an institution's programs and majors.

BOISE BIBLE COLLEGE	Christian Teaching • Christian Psychology • Christian Leadership Intercultural Studies • Preaching Ministry • Worship Arts Early Childhood Education • Family and Children's Ministry Family and Youth Ministry • Bible Certificate www.boisebible.edu/degree-programs
BOISE STATE UNIVERSITY	Business • Nursing • Psychology • Kinesiology • Biology • Health Science Computer Science • Criminal Justice • Mechanical Engineering majors.boisestate.edu
BRIGHAM YOUNG UNIVERSITY - IDAHO	Business, Communications • Nursing • Education Construction Management • Engineering www.byui.edu/catalog#/programs
COLLEGE OF EASTERN IDAHO	General Education AA and AS • Registered Nursing • Automotive Welding • Information Technology Services • Cyber Security www.cei.edu/programs-of-study
COLLEGE OF SOUTHERN IDAHO	Liberal Arts • General Business • Healthcare • Criminal Justice Education • Business Management • Practical Nursing • Digital Media Accounting/Bookkeeping • Diesel Technology csi.smartcatalogiq.com/en/2020-2021/Catalog/Majors
COLLEGE OF WESTERN IDAHO	Business • Auto Technology/Auto Body • Criminal Justice/Law Enforcement Nursing • Welding • Dental Assisting • Engineering • Health Sciences Fire Service Technology • Communication/Marketing cwi.edu/program

IDAHO STATE UNIVERSITY	Nursing • Dental Hygiene • Pre-Health Professions • Psychology Accounting • Robotics • Nuclear Engineering • Biology Physical Education - Exercise Science Emphasis • Welding isu.edu/majors/
LEWIS-CLARK STATE COLLEGE	Teacher Education (both Secondary and Elementary) CTE Programs including: <i>Diesel Technology, Graphic Communications, Information Technology, Welding</i> Nursing • Social Work • Creative Writing BFA • Exercise Science Justice Studies • Kinesiology • Radiographic Science • Business • History catalog.lcsc.edu/programs/
NORTH IDAHO COLLEGE	General Studies • Nursing • Health Professions • Business • Computer Science Computer Information Technology / Network Security Administration Education • Psychology • Welding Technology • Diesel Technology nic.edu/programs/
NORTHWEST NAZARENE UNIVERSITY	Computer Science: Artificial Intelligence • Nursing • Engineering • Biology Education • Business • Digital Media • Wildlife Biology and Ecology Health Communication • Youth, Children and Family Ministry nnu.edu/majors
THE COLLEGE OF IDAHO	Business • Psychology • Biology • International Political Economy Biomedical Science • Environmental Studies • History • Political Economy Marketing and Digital Media • Exercise Science www.collegeofidaho.edu/academics/peak
UNIVERSITY OF IDAHO	Agricultural and Life Sciences • Art and Architecture Business and Economics • Education, Health and Human Sciences Engineering • Law • Letters, Arts and Social Sciences • Natural Resources Science • Pre-Health Professions/WWAMI Medical Program www.uidaho.edu/degree-finder

Infinite Futures

Imagine a virtual hallway with *hundreds* of doors leading to different futures. Instructions for entry are posted next to each door.

That's it. That's the website.



Professional Training

Next Steps Idaho partners with the Idaho Workforce Dev. Council, Idaho Business for Education, the Idaho Mfg. Alliance and others to offer CTE pathways driven by Idaho employers.



Career Technical Education (CTE) prepares youth and adults for a wide range of high-wage, high-skill, high-demand careers.



Identify Your Skills

Find your match when it comes to jobs, work environment(s), salaries, lifestyles, etc.



Explore Your Options

Compare licenses with certificates, or 2- and 4-year degrees with apprenticeships.



Make Your Reality

Use the Steps Idaho *Financial Aid Hub* for proven tips and out-of-the-box ways to pay.



Enjoy Your Work

Next Steps Idaho helps Idahoans advance or change jobs to achieve professional fulfillment.



CTE Programs Directory



Workforce Training Ctr. Directory



Idaho LAUNCH Training Funds



Idaho Apprenticeships Video Library